

BUC

ELEMENT SERIES

ELMTBKU

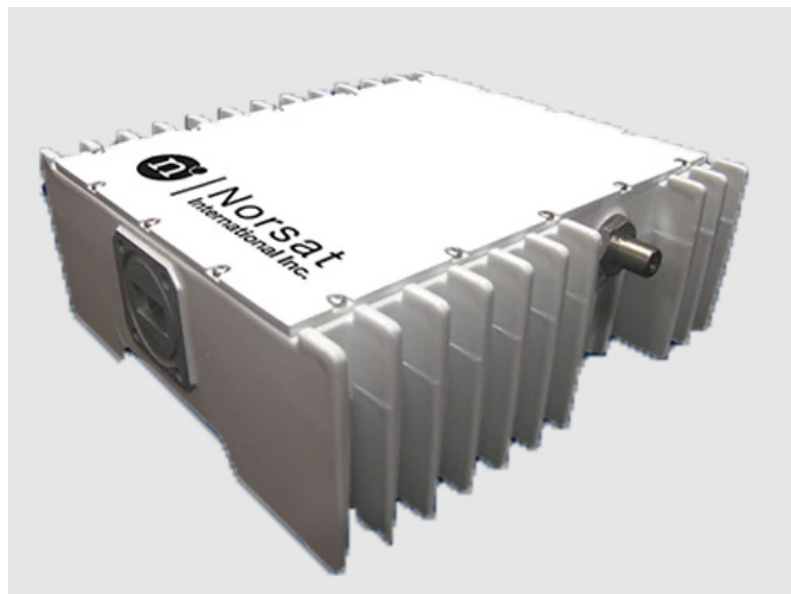
Available Frequency Bands:

Standard

Frequency Band: 14.0-14.5
 L.O. Frequency: 13.05
 IF Frequency: 950-1450

Extended

Frequency Band: 13.75-14.5
 L.O. Frequency: 12.80
 IF Frequency: 950 - 1700



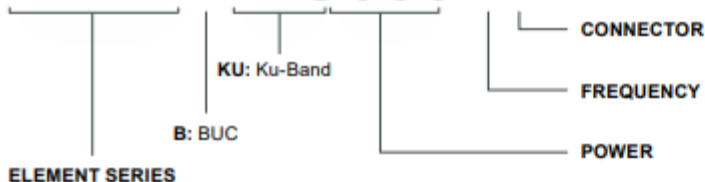
SPECIFICATIONS

	ELMTBKU006	ELMTBKU008	ELMTBKU010		ELMTBKU006	ELMTBKU008	ELMTBKU010
Output Power (P1dB)	37.8 dBm min.	39 dBm min.	39.5 dBm min.	Input Voltage	+18V to +24V DC via IFL		
Output Power (Psat)	38.3 dBm min.	39.5 dBm min.	40 dBm min.	Power Consumption	48W max.	75W max.	100W max.
Phase Noise (SSB) max.		-60 dBc/Hz at 100Hz -70 dBc/Hz at 1kHz -80 dBc/Hz at 10kHz -90 dBc/Hz at 100kHz -100 dBc/Hz at 1MHz		Input (waterproof)	Type F Connector (75 Ohm) Type N Connector (50 Ohm)		
Linear Gain	55 dB typ., 50 dB min., 70 dB max.	65 dB typ., 60 dB min., 70 dB max.	67 dB typ., 62 dB min., 72 dB max.	Output (waterproof)	WR-75 waveguide grooved		
Gain Flatness:		≤ 4.0 dB p-p ≤ 1.5 dB p-p ≤ 4.0 dB p-p		Dimensions (L x W x H)	006: 176.1 mm x 161.5 mm x 65 mm 008: 175.9 mm x 169 mm x 101 mm 010: 220 mm x 194.2 mm x 103.5 mm		
Output Spurious:		≤ -60 dBc ≤ -50 dBc		Weight	006: 1.8 kg (3.97lb) 008: 2.7 kg (5.95 lb) 010: 4.5 kg (9.92 lb)		
Noise Power Density		-80 dBm/Hz in Tx -156 dBm/Hz in Rx		Operating Temperature	-40 to +55°C		
Input VSWR		2.0 : 1 max.		Storage Temperature	-40 to +80°C		
Output VSWR		2.0 : 1 max.		Humidity	0-100% condensing		
				External Ref Freq	10 MHz (sine-wave), -5 to +5 dBm		
				Enclosed Accessories	Screws, Gasket		

BUC

ELEMENT SERIES

ELMTBKU006-EF



- F: Type F Connector (75 Ohm)
- N: Type N Connector (50 Ohm)
- S: Standard
- E: Extended
- 006: 6W
- 008: 8W
- 010: 10W

