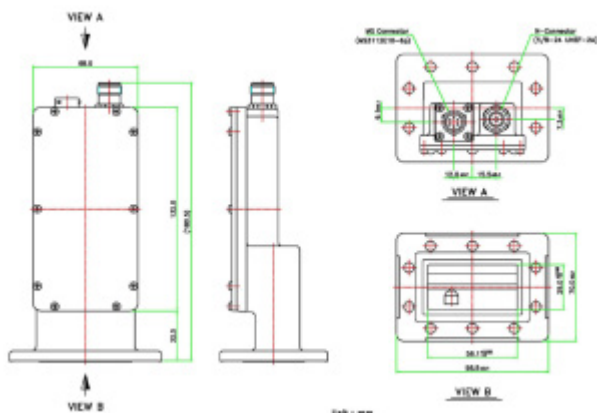


**C-BAND**

**8000 SERIES**

**LNA-8000SP**



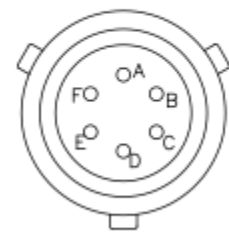
**HOW TO ORDER**

**LNA-8000SP**

**P** DC via MS3112E10-6P  
**C** DC via Output Connector  
**CONNECTOR**  
**N** - 50 Ohm  
**S** - SMA 50 Ohm  
**LNA SERIES #**

**PIN-OUT**

Connector	Signal Name
A	Supply Voltage
B	GND
C	GND
D	NC
E	NC
F	NC



**Note:** Mating connector is supplied.



## C-BAND

### LNB REDUNDANT SWITCH SYSTEM

## Specifications

<b>Frequency</b>	3.40 - 4.20 GHz	<b>DC Power</b>	Via + 15V to + 24V DC
<b>Noise Temperature</b>	30K max. at room temp.		MS3112E10-6P
<b>Input VSWR</b>	2.2 : 1 max.		Output Connector
<b>Output VSWR</b>	2.2 : 1 max.	<b>Current</b>	200 mA max.
<b>Gain</b>	55 dB min, 60 dB typ, 65 dB max.	<b>Input (waterproof)</b>	CPR-229G waveguide grooved
<b>Gain Flatness (over full band)</b>	± 4 dB p-p	<b>Output (waterproof)</b>	N-Connector (50 Ohm) SMA-Connector (50 Ohm)
<b>Output P1dB</b>	+ 5 dBm min.	<b>Dimensions (L x W x H)</b>	181 mm x 100 mm x 70 mm (7.1 in x 3.94 in x 2.75 in)
		<b>Weight</b>	630 g (22.2 oz)
		<b>Operating Temperature</b>	- 40 to + 60°C
		<b>Storage Temperature</b>	- 40 to + 80°C